



OWENSBORO PARKS & RECREATION

September, October & November



SNEAK PEAK INTO
HOLIDAY EVENTS &
WINTER PROGRAMS!

270-687-8700

owensboroparks.org





Table of Content



General Information

Calendar Highlights	3
Contact Information	4
Registration Information	5

Administration Center

Amenities and Office Hours	6
Day Camps	7
Indoor Rental Spaces	8
Youth/Adult Volleyball Leagues	9
Esports/Indoor Pickleball	10

Dugan Best Recreation Center

Amenities	11
Hours of Operation and Rental Information	12
Special Events	13

Edge Ice Center

Amenities	14
Public Skating Sessions, Passes, Private Rental	15
Party Packages	16
Special Skate Sessions	17
Learn to Skate	18
Freestyle Ice, Stick n Puck	19
Special Events	21-23

Golf Courses

Amenities and Hours	23
FootGolf, Scrambles, Par 3, Happy Hour	24
Black Friday Sale, Outings, Finn Cycles and SkyTrak	25

Jack C Fisher Park Fields

Amenities and Coming Soon	26
---------------------------	----

Smothers Park

Amenities	27
Concessions, Rental Information, Party Packages	28
Special Events	29

Parks and Amenities

Park Locations	30
Park and Facility Addresses, Holiday in the Park	31
Park and Facility Amenities	32
Shelter Reservations	33
Travis Aubrey Skate Park	34
Paved Trails / Nature Trails	35-36



Calendar Highlights

SEPT	6	Learn to Skate Session - Edge	Pg. 18
	15	Fall Break Camp - Registration Deadline	Pg. 7
	13-15	Owensboro Air Show	Pg. 29
	20	Adult Volleyball—Registration Deadline	Pg. 9
OCT	8-10	Fall Break Skating Sessions	Pg. 17
	11	Learn to Skate - Registration Deadline	Pg. 18
	24	Trail of Treats	Pg. 29
	25	Halloween Glow Skate - The Witches are Back	Pg. 20
	26	Trunk or Treat - Dugan Best Recreation Center	Pg. 13
NOV	1-30	Ben Hawes and Hillcrest Golf Courses 2025 Pass Sales	Pg. 25
	15	Smothers Christmas Tree Lighting	Pg. 29
	16	Christmas Parade	Pg. 29
	22	Turkey Shoot - Dugan Best Recreation Center	Pg. 13
	27 & 29	Holiday Skate Sessions - Edge Ice Center	Pg. 17
	22	Holiday in the Park	Pg. 31
DEC	1	Holiday Camp Deadline	Pg. 7
	5	Dugan Best Candy Cane Hunt	Pg. 13
	19-21	Holiday Skate Sessions - Edge Ice Center	Pg. 17
	21	Polar Express—Edge Ice Center	Pg. 21
	31	New Years Eve Glow Skate	Pg. 22



CITY COMMISSION

Thomas H. Watson	Mayor
Mark Castlen	Mayor Pro-Tem
Robert Glenn	Commissioner
Pam Smith-Wright	Commissioner
Sharon NeSmith	Commissioner
Nate Pagan	City Manager



PARKS & RECREATION STAFF

Amanda Rogers	Director of Parks & Recreation	amanda.rogers@owensboro.org
Kerry Bodenheimer	Recreation Superintendent	kerry.bodenheimer@owensboro.org
Sam Bodine	Greens Superintendent Ben Hawes & Hillcrest Golf Courses	samuel.bodine@owensboro.org
Angie Drury	Office Manager	angie.drury@owensboro.org
Michael Gray	Recreation Supervisor Dugan Best Recreation Center	michael.gray@owensboro.org
Jennifer Hodges	Recreation Facility Manager Smothers Park & City Pools	jennifer.hodges@owensboro.org
Landon Roberts	Recreation Facility Specialist Edge Ice Center	landon.roberts@owensboro.org
Andrea Johnson	Recreation Specialist Dugan Best Recreation Center	andrea.johnson@owensboro.org
Brittni Klotzback	Recreation Supervisor Youth Day Camps	brittni.klotzback@owensboro.org
Sammy Lackey	Assistant Greens Superintendent Ben Hawes Golf Course	sammy.lackey@owensboro.org
Tina Lynch	Recreation Facility Manager Edge Ice Center	tina.lynch@owensboro.org
Vacant	Recreation Facility Manager Jack C. Fisher Park Fields	
Emily Anderson	Recreation Specialist Jack C. Fisher Park Fields/Edge Ice Center	emily.anderson@owensboro.org
Jon-Michael Perry	Crew Leader Jack C. Fisher Park Fields	jon.perry@owensboro.org
Amber Schrecker	Assistant Greens Superintendent Hillcrest Golf Course	amber.schrecker@owensboro.org
Charles Whelan	Golf Courses Manager Ben Hawes & Hillcrest Golf Courses	charles.whelan@owensboro.org

Inclusion Statement

All programs and activities are open to everyone without regard to race, color, religion, sex, national origin, disability, age or political affiliation.

Accessibility—Reasonable Accommodations Policy

It is the intent of the Owensboro Parks & Recreation to make all programs and facilities accessible to individuals with disabilities. If an accommodation is necessary for a patron's participation, please advise Owensboro Parks & Recreation staff of the needed service &/or accommodation in advance or at the time of registration by contacting our office at 270-687-8700.

Scholarship Statement

The Owensboro Parks & Recreation Department strives to make available affordable, accessible and enjoyable programs, activities & facilities for all residents of the City of Owensboro. As a part of this effort, the staff established a Scholarship Fund available for City residents to supplement fees based upon a resident's ability to pay. Please request a scholarship application, fully complete the paperwork and return with any required documents to be considered for this service.

Privacy Statement

Owensboro Parks & Recreation is sensitive to the privacy & security interest of the community. We only collect the personal information necessary to provide the highest level of service. Please note that all non-exempt information collected on Owensboro Parks & Recreation paperwork or by our website may be subject to public disclosure under KRS 61.870 et.seq., of the Kentucky Open Records Act. However, public records containing information of a personal nature are protected from disclosure by the personal privacy exemption of state law where the public disclosure thereof would constitute a clearly unwarranted invasion of personal privacy. All visits to Owensboro Parks & Recreation Website are automatically recorded in a log file maintained on our web server. The information we collect is anonymous: namely, it is general information such as what pages are viewed, what types of software you use to access the site, and what site, if any, linked you to the Owensboro Parks & Recreation website. Other information is collected on a voluntary basis when users send or input information into the site. This information is used only to provide or improve city services and is not shared with other organizations for commercial purposes. Personal data in our possession is maintained and used in ways that respect individual privacy and will never be shared or sold to other entities, with the exception of health information collected and shared in the case of providing medical treatment.

Registration Information

Walk-in

1530 McJohnson Avenue
Monday - Friday
7:30 - 11:30 a.m.
12:30 - 4:30 p.m.

Phone

270-687-8700 - Registration will be accepted by phone for payments with Visa, MasterCard or Discover.

Please be prepared to give the following information:

1. Name of Credit Cardholder
2. Card Number
3. Expiration Date
4. Program Name & Time



If you register by phone, please report to the first class ten (10) minutes early to sign a Statement of Release.

Registrants will not be able to participate until the Statement of Release is signed.

Fax

FAX a completed registration form to **270-687-8708**. Be sure to include your Visa, MasterCard or Discover number & expiration date.

Online

1. Go to: owensboroparks.org
2. Click on: Online Registration
3. If new: Create an Account & Save
If returning: Type Username & Password
4. Click on: Activity you are interested in registering

Mail

1. Fill out registration form completely.
2. All participants (or parent of a participant) registering for a program are required to sign the "Statement of Release."
3. Payment may be made by personal check, money order, Visa, MasterCard or Discover. Please make checks payable to City of Owensboro.
4. Mail registration form and payment to:
Owensboro Parks & Recreation Department
1530 McJohnson Avenue
Owensboro, KY 42303
Attention: Registration

Stay Connected

- 1) Go to owensboroparks.org
- 2) Click on stay connected
- 3) Select: Sign up for text alerts

Fees

All fees must be paid in full at time of registration.

6% sales tax added to all program registration and facility reservation fees.

All programs have a minimum and maximum enrollment and are filled on a first-come, first-serve basis. In the unlikely event your program is cancelled or altered due to enrollments, we will notify you by phone. Decisions on cancellations will be made by noon three working days prior to the beginning of the program.

In case of cancellation, you may transfer to another program or receive a full refund.

The Owensboro Parks & Recreation Department reserves the right to cancel, combine, or divide programs to change the time, date or place of meeting, to change the instructor assignments, and to make other revisions as necessary.

Changes / Cancellation

Programs are sometimes altered or canceled due to low registration numbers, weather, etc.

All changes made will be recorded on the voice message as soon as a decision is made.

Call 270-687-0000 to see if changes or cancellations have occurred.

Refunds

Activities/Programs: A refund may be issued, minus an Administrative Fee, via check or household credit if the request is made 2 business days prior to the date of the activity/program. After the first meeting or the beginning date of the program, if you are in any way dissatisfied with our program, only a household credit will be given.

Leagues: Registration fee will be refunded only if the team withdraws prior to preparation of the game schedule.

Shelter Reservations: A refund may be issued, minus an Administrative Fee, via check or household credit if the request is made at least 14 business days prior to the reservation date.

Please allow 2-3 weeks to receive a refund check in the mail.

All household credits must be used within 365 days of being applied to an account.

Owensboro Parks & Recreation Administration Center

1530 McJohnson Avenue

270.687.8700

Monday - Friday

7:30 a.m. - 4:30 p.m.



AMENITIES

- Conference Room
- Kitchen
- Gymnasium

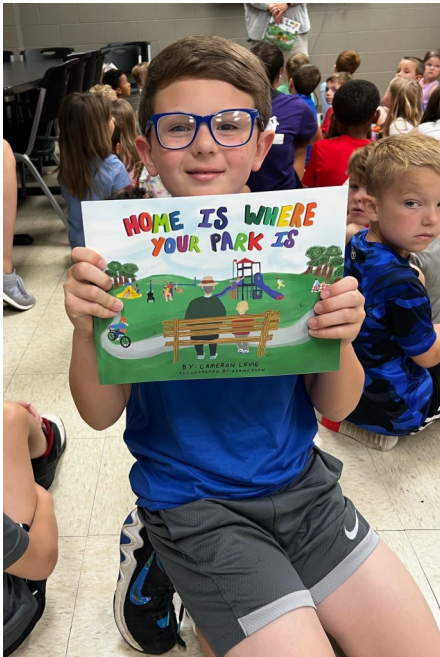
HIGHLIGHTS

- Indoor Rental Information
- Adult Volleyball
- Little Spikers
- Fall Camp
- Holiday Camp

Closed:

- Labor Day, September 2
- Thanksgiving, November 28 & 29





Take a break with us!

Bring all your energy, creativity, and thirst for **FUN** to our **Day Camp Program**.

Member of the American Camp Association (ACA) to help provide your child with an exciting, well-rounded recreational and educational experience.

Planned activities include arts, crafts, games, sports, visitors to camp, and fun surprises!

Breakfast, morning, and afternoon snack provided. **Campers will need to bring a sack lunch each day.**

Ages: 5-12 years

(minimum grade requirement - currently enrolled in Kindergarten)

Time: 7:30 a.m. – 5:30 p.m.

Early drop off 7:00 a.m. - \$2 per child per day

Location: Owensboro Parks & Recreation Administrative Center

**An annual registration fee of \$70, plus tax is due at the time of registration if your child did not attend an Owensboro Parks Camp Program in 2024*

Must pre-register.

Fall Break Camp

Dates: October 7-11

Camp Fee: \$115 per camper

Registration Deadline: August 30



Home on the FARM

Field Trip: Cecil's Farm

Fall games & crafts

Weenie & Marshmallow Roast



Holiday Break Camp

Dates: December 19-January 3

(closed December 24, 25, and January 1)

Camp Fees: \$230 for 9 days/ or \$30 per day

(must sign up for 4 days minimum)

Registration Deadline: November 22



Special Event: Christmas Party

Make cards for Nursing Home

Christmas Crafts

Field Trip: Edge Ice Center
December 26 & January 2

Present Pass

Indoor Facility

SPACE FOR RENT

Kitchen Room - capacity 56 people

- ◆ \$70 (2 hours or less)
- ◆ \$35 each additional hour

Gym - Capacity 235 people

- ◆ \$80 (2 hours or less)
- ◆ \$40 each additional hour
- ◆ **Available for volleyball, basketball, & pickleball**

Whole Building

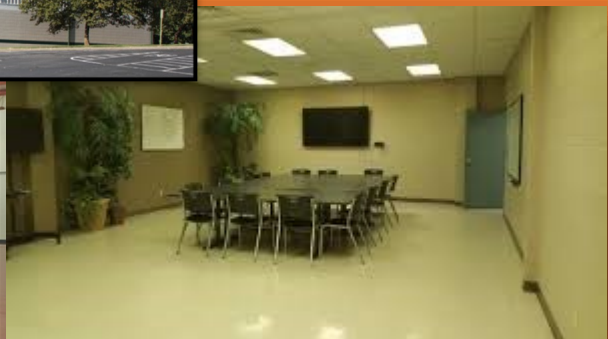
- ◆ \$110 (2 hours or less)
- ◆ \$55 each additional hour

Perfect For

- Holiday Parties
- Birthday Parties
- Wedding Shower
- Baby Shower
- Team Celebration
- Team Practice

Sundays require the Whole Building rental.

To reserve, call Brittini Klotzback at 270-687-8710



Little Spikers



Grades: 2nd - 3rd & 4th - 5th
Begins: February 8
Registration Deadline: January 17
Location: Owensboro Parks & Recreation Administrative Center (all practices and games)
Fee per Player: \$102

Program Format

Grow your volleyball knowledge and skills during our practices, then put that new knowledge/skill to the test during the games.

- 1 tryout/evaluation day
- Regular Season
- ⇒ 4 practice / 4 games
- Single-elimination tournament



Instructional Volleyball League

Call 270.687.8700 or owensboroparks.org

Adult Volleyball Leagues

You need only 6 people to play - 4 men and 2 women

Maximum of 12 per roster

Must be 16 or older to participate

Games will be played on Mondays or Tuesdays

Fall League Begins: Monday, October 14
Registration Fee: \$190 per team, per league
Registration Deadline: Friday, September 20
Mandatory Team Captains' Meeting:
 Monday, September 30 at 5:30 p.m.
 Owensboro Parks & Recreation Administrative Center

Winter League Begins: Monday, January 13
Registration Fee: \$190 per team, per league
Registration Deadline: Friday, December 13
Mandatory Team Captains' Meeting:
 Wednesday, January 8 at 5:30 p.m.
 Owensboro Parks & Recreation Administrative Center



PICKLEBALL

OPEN PLAY!



October 22 - March 6

Tuesdays and Thursdays
9:00-11:00 a.m.

Owensboro Parks & Recreation
Administrative Center

Fee: \$3 per player

NO PLAY

November 28 (Thanksgiving)

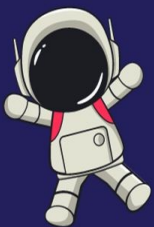
December 19 - January 7 (Holiday Break)



MISSION CONTROL
ESPORTS LEAGUES

gathering community
through recreational esports

FREE Esports League



This is a safe and engaging environment
for youth ages 8 and up.

Registration Opens:
November 11

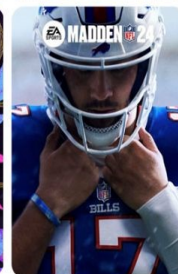
Registration Closes:
December 30

League Dates:
January 2 - February 6

Games Days:
Thursday Nights at 8:00 p.m.



SCAN ME





**Dugan Best
Recreation Center
1003 Omega Street
270-687-8714**

AMENITIES

- Gymnasium
- Game Room
- Computers
- Kitchen Area
- Cardinal Fitness/Workout Room
(for use by those 15 years and above)

SPECIAL EVENTS

- Trunk of Treats
- Basketball Turkey Shoot
- Candy Cane Hunt
- Holiday Dinner

HIGHLIGHTS

- Hours of Operation
- Rentals



Dugan Best Recreation Center

Hours of Operation

During School Year

Monday - Friday 2:30 - 7:00 p.m.
 Saturday 11:00 a.m. - 7:00 p.m.
 Sundays CLOSED

Fall Break Hours October 7-11

Monday - Saturday 11:00 a.m. - 7:00 p.m.
 Sundays CLOSED



Mission Statement

Provide a wholesome, quality, clean, and safe environment for youth and adults of the community.

The center provides activities that can enhance the future goals of our youth.



Rental Spaces

Kitchen Room - capacity 56 people

- ◆ \$70 (2 hours or less)
- ◆ \$35 each additional hour

Gym - Capacity 235 people

- ◆ \$80 (2 hours or less)
- ◆ \$40 each additional hour

Whole Building

- ◆ \$110 (2 hours or less)
- ◆ \$55 each additional hour

Game Room Extra \$10 capacity of 72

Sunday's require the Whole Building rental.

To reserve call 270-687-8714



Their mission is to help troubled youth avoid incarceration and break cycles of gun violence, poverty and the stigma of mental health issues. We also strive to support children pursue higher education and take on the workforce upon graduation.

For more information or if you are interested in getting involved email breakingthecycle2019.20@gmail.com

Dugan Best - Special Events

Breaking the Cycle TRUNK of TREATS

Saturday, October 26
4:30-7:00 p.m.
Open to all ages

Games, food, activities, drawings
Best Halloween Costume Contest

Hosted By:

Dugan Best Recreation Center & Breaking the Cycle



Basketball Turkey Shoot

November 27

5:00 p.m.

Chance to win a turkey or a
Thanksgiving Basket!

Ages:

9-13

14-16

17-18

Contests Includes:

3 point

free throw

ping pong cup



Thursday,
December 5
4:00 -5:30 p.m.
Ages 5-12
FREE



HOLIDAY DINNER

Please join us on
Monday, December 23
5:00-6:30 p.m.
Open to all ages



City of Owensboro Edge Ice Center

1400 Hickman Avenue
270.687.8720
Call for hours



AMENITIES

- 42,600 sq. foot Arena
- 200' x 85' Sheet of Ice
- Bleacher Seating for 300+
- 5 Locker Rooms
- Referee Room
- Spacious Lobby Area with LED Lighting and 2 Flat- Screen TVs
- 4 Private Party Rooms
- Concessions

HIGHLIGHTS

- Public Skating Times and Lessons
- New Morning Sessions
- School's Out Sessions
- Home School Skate Sessions
- Party Packages

SPECIAL EVENTS

- Halloween Glow Skate—Witches on the Rise Again
- Polar Express Skate with Santa
- New Year's Eve Glow Skate Party
- Stay tuned for 2025 events!

HOME OF

Owensboro Figure
Skating Club



Owensboro Youth
Hockey Association



Owensboro Rampage
Travel Hockey Program ages 8U & Up
KSHSL State Champions
2012, 2016, 2020, 2021, 2022, 2024



Weekly Public Session Hours - September 6 - April 2025

- Patrons under the age of 16 must be accompanied by an adult 18 or older at all times
- Guardian / Spectator Fee - There is a \$2 fee for patrons entering, but not skating.
- Own your own skates? Receive a discounted skate for only \$6.
- **Group/Club/Organization Rate** (10 or more) only \$5 per person (*includes skate rental*)
- *Locker Rental - \$2 per locker*



Daytime Sessions			Evening Sessions		
Friday 1st & 3rd of each month	1:00-3:30 p.m. Home School Skate	\$5	Thursday 1st & 3rd Thursday January – March	6:00-8:00 p.m. Family Fun Night	\$5
<i>No Session December 20, January 3, March 7, April 4</i>					
Saturday	1:00-3:30 p.m.	\$7	Friday	7:00-9:30 p.m.	\$7
Sunday	1:00-3:30 p.m.	\$7	Saturday	7:00-9:30 p.m.	\$7

Morning Skate Public sessions

- October 26 9:00-11:30 a.m.
- November 23 9:00-11:30 a.m.
- December 21 9:00-11:30 a.m.
- January 11 9:00-11:30 a.m.



Edge Ice Center Closed Holidays and/or Tournaments

- **September 29** afternoon session canceled
- **October 26** evening session canceled
- **November 1-3 & 8-10** All sessions canceled
- **January 4** All sessions canceled

For Additional information on School is Out Skating Sessions during school breaks turn to page 17.

Skate Sharpening

\$10 more than 24 hours' notice
\$15 less than 24 hours' notice
(subject to availability)

Passes

Individual Pass	Family Pass <i>(Up to 4 members)</i>
3 months - \$95	3 months - \$225
6 months - \$170	6 months - \$320

Covers admission and skate rental

Punch Cards

Can be used at any
Public Session
10 visit card – \$55
5 visit card – \$30

Private Rental

Why not reserve the Edge Ice Center for your own personal use, special party or group gathering?

Relax and leave the clean up to us!

Call 270-687-8720 to determine available dates and times.



CITY OF OWENSBORO'S



NEW!!!

BIRTHDAY PARTY PACKAGES!

BASIC PACKAGE: \$135

Private Party Room, Skate Rental, Party Host, Unlimited Popcorn, and THE COOLEST CUP IN TOWN
Up to 10 Skaters (\$5 per additional)

Want to Upgrade?

Choose one of our party packages!

CLASSIC PACKAGE:

\$165

Includes BASIC PACKAGE
AND
10 Hotdogs
10 Fountain Drinks
\$7 per additional skaters

GLAZED PACKAGE:

\$165

Includes BASIC PACKAGE
AND
1 Dozen Glazed Donuts
Hot Chocolate or OJ
\$7 per additional skaters

PIZZA PARTY PACKAGE:

\$175

Includes BASIC PACKAGE
AND
Two 12" Pizzas
10 Fountain Drinks
\$9 per additional skaters

Any outside FOOD or DRINKS=\$30 FEE
(Excludes Desserts-Cakes, Cupcakes, Ice Cream)

SPECIAL EVENTS & SCHOOL IS OUT PUBLIC SESSIONS

PARTICIPANTS UNDER THE AGE OF 16 MUST BE ACCOMPANIED BY AN ADULT 18 YEARS OR OLDER AT ALL TIMES.

All prices include admission and skate rental. \$2 for parent/guardian spectators.

Own your own skates? Receive a discount and skate for only \$6!

Tickets may be purchased in advance at owensboroparks.org or at the ticket office.

MONTH	DATE	DAY	MORNING	AFTERNOON	EVENING	FEE	EVENT
Oct.	8	Tuesday		1:00-3:30 p.m.		\$7	Fall Break
	9	Wednesday		1:00-3:30 p.m.		\$7	Fall Break
	10	Thursday		1:00-3:30 p.m.		\$7	Fall Break
	25	Friday			7:00-9:30 p.m.	\$10	GLOW SK8: Witches
	26	Saturday	9:00-11:30 a.m.			\$7	Morning Session
	26	Saturday		1:00-3:30 p.m.		\$7	Costume Party
Nov.	5	Tuesday		1:00-3:30 p.m.		\$5	Election Day
	23	Saturday	9:00-11:30 a.m.			\$7	Morning Session
	27	Wednesday		1:00-3:30 p.m.		\$7	Holiday Break
	28			Thanksgiving Day			Closed
	29	Friday		1:00-3:30 p.m.		\$7	Holiday Break
Dec.	19	Thursday		1:00-3:30 p.m.		\$7	Winter Break
	20	Friday		1:00-3:30 p.m.		\$7	Winter Break
	21	Saturday	9:00-11:30 a.m.			\$7	Morning Session
	21	Saturday		1:00-3:30 p.m.		\$7	Santa: Polar Express
	23	Monday		1:00-3:30 p.m.		\$7	Ugly Sweater Party
	24			Christmas Eve			CLOSED
	25			Christmas Day			CLOSED
	26	Thursday		1:00-3:30 p.m.	7:00-9:30 p.m.	\$7	Winter Break
	27	Friday		1:00-3:30 p.m.		\$7	Winter Break
	30	Monday		1:00-3:30 p.m.	7:00-9:30 p.m.	\$7	Winter Break
	31	Tuesday		1:00-3:30 p.m.	6:00-8:30 p.m.	\$7	NYE Special Session
	31	Tuesday			10:00 p.m.-12:30a.m.	\$15	NYE GLOW SK8



Edge Ice Skating Programs



The program follows the guidelines set forth by the Ice Skating Industry (I.S.I) the nation's largest provider of recreational skating programs. Classes are offered for 3 years and up, teaching recreational skills, hockey, and figure skating.

Fees include: ISI Membership, skate rental, 30 minutes of instruction and 30 minutes of practice ice per week
 Freestyle (1+) includes 15 minutes warm-up plus 45 minutes instruction on Mondays 4:30 - 5:30 p.m.

Sessions take place year round visit website for class level descriptions

Intro to Synchronized Skating

Requires successful completion of Beta Level Lessons.
 Synchro is a team skating sport, where up to 16 skaters perform together as a team.
 offered Tuesdays at 6:00 p.m.



Learn to Play Hockey



Perfect for players who are new to the sport, teaching shooting, passing, stick skills and continue working on skating skills. Players must wear full gear. Loaner gear available for players in house league with OYHA.

Lessons offered September & May
Sessions listed below.

Special Skater

Beginner levels offered for special needs skaters of all ages. Step-by-step progression of skills makes learning fun, and fast! It's important to master these skating "basics" before moving on to higher levels of achievement.



Coming soon!

	Session 1		Session 2		Session 3	
Class Dates	September 9-October 1		October 14-November 19		December 2 - December 17	
Registration Deadline	Friday, September 6, 2024		Friday, October 11, 2024		Friday, November 29, 2024	
	Fee	Class Time	Fee	Class Time	Fee	Class Time
Tots Level 1 & 2 (ages 3-5)	\$45	4:30-5:00 p.m.	\$61	4:30-5:00 p.m.	\$45	4:30-5:00 p.m.
Tots Level 3 & 4 (ages 3-5)	\$45	4:30-5:00 p.m.	\$61	4:30-5:00 p.m.	\$45	4:30-5:00 p.m.
Pre-Alpha (ages 6+)	\$45	4:30-5:00 p.m.	\$61	4:30-5:00 p.m.	\$45	4:30-5:00 p.m.
Pre-Alpha (ages 6+)	\$45	5:30-6:00 p.m.	\$61	5:30-6:00 p.m.	\$45	5:30-6:00 p.m.
Alpha	\$43	5:30-6:00 p.m.	\$56	5:30-6:00 p.m.	\$43	5:30-6:00 p.m.
Beta	\$43	5:00-5:30 p.m.	\$56	5:00-5:30 p.m.	\$43	5:00-5:30 p.m.
Gamma & Delta	\$43	5:00-5:30 p.m.	\$56	5:00-5:30 p.m.	\$43	5:00-5:30 p.m.
Freestyle 1-10 (Mondays)	\$51	4:30-5:30 p.m.	\$66	4:30-5:30 p.m.	\$51	4:30-5:30 p.m.
Intro to Synchro	\$43	6:00-6:30 p.m.	\$56	6:00-6:30 p.m.	\$43	6:00-6:30 p.m.
Learn to Play Hockey (Mondays)	\$50	5:30-6:30 p.m.				

Practice ice time is offered to all classes except intro to Synchro and Learn to Play Hockey. Class levels Tots 1-4, Pre-Alpha, and Alpha have practice ice time from 5:00-5:30 p.m. Beta, Gamma and Delta have practice ice time 5:30-6:30 p.m. Freestyle 1-10 have practice ice time 4:30-4:45 p.m.

Freestyle Ice

Attention group lesson participants and figure skaters! Need extra ice time to practice crossovers, spins and jumps? Perfect your skills at Freestyle Ice!

Times: Fridays: 4:30 - 5:30 p.m.

Fees: \$8.50 per session

Discount Available for OFSC Members with Card

12 visit punch cards available for \$85
see counter for details

*Times may change or vary due to events taking place at the Edge.
Please call 270-687-8720 for most updated schedule.*



Stick n Puck

ATTENTION HOCKEY PLAYERS...

Need some extra on-ice practice?

Pick-up games and scrimmages.

Discount Available for OYHA Members with Card

Sundays

5:00 - 6:00 p.m. (4-12 year olds) \$8

6:00 - 7:00 p.m. (13-17 year olds) \$8

12 visit punch Cards available for \$80
see counter for details

Parent and player must sign rules and wavier prior to participation for minors.

FULL GEAR REQUIRED

*Times may change or vary due to events taking place at the Edge.
Please call 270-687-8720 for most updated schedule.*

Halloween Glow Skate



THE WITCHES ARE BACK!

GLOW SKATE PARTY

FRIDAY, OCTOBER 25

7:00-9:30 P.M.

\$10 PER PERSON

COSTUMES ARE ENCOURAGED



Participants under the age of 16 MUST be accompanied by an adult 18 years or older at all times.

Family Costume Skate Party



Saturday, October 26

1:00-3:30 p.m.

\$7 per skater

Halloween event fun for the whole family,
prizes for best individual costume &
best family costume



Edge Ice Center Special Events

WE WANT TO SEE YOUR HOLIDAY SPIRIT!!



Holiday Ugly Sweater Skate Party



Monday, December 23
1:00-3:30 p.m.

\$7 per person, includes
skate rental



Experience

THE POLAR EXPRESS

*wear your pajamas & visit with Santa
while enjoying hot chocolate and skating with friends!*

Saturday, December 21

1:00-3:30 p.m.

\$7 per skater includes skate rental





NEW YEAR'S EVE GLOW SKATE
10:00 P.M. -12:30 A.M.
\$15 PER PERSON
LIVE DJ, GLOW STICKS
AND MIDNIGHT PARTY FAVORS
(WHILE SUPPLIES LAST)

Participants under the age of 16 MUST be accompanied by an adult 18 years or older at all times.



UPcoming
EVENTS

Swift n' Skate - February 1
Mardi Gras Family Masquerade Skate - March 1
Super Hero Skate - April 12
Galaxy Glow Skate - May 4

Ben Hawes Golf Course

400 Booth Field Road

270.687.7137

Pro-Shop Hours

8:00 a.m. - Dusk

Closed if below 40*

Hillcrest Golf Course

4346 Old Hartford Road

270.687.8717

Pro Shop Hours

8:00 a.m. - Dusk

Closed if below 40*

AMENITIES

- Championship Course Offering 6,632 yards of Golf
- 18 Hole
- 9 Hole Par 3 Course
- Pro-Shop
- Pull Cart, Golf Cart, Club Rentals

- 9 - Hole Municipal Golf Course
- Practice Green
- Chipping Green
- Pro-Shop
- Pull Cart, Golf Cart, Club Rentals

SPECIAL EVENTS

Black Friday 2025
Season Pass Sale



HIGHLIGHTS

Happy Hour

Weekly Scrambles

Daily Fees

Sky Trak Simulator

Finn Cycles Rentals

Online Tee-Times

Happy Hour

Weekly Scrambles

Daily Fees





400 Booth Field Road

September - October Pro-Shop Hours 8:00 a.m. - Dusk



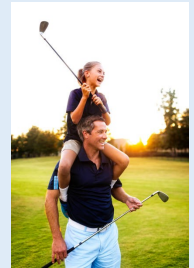
4346 Old Hartford Road

Daily Fees

	<u>Ben Hawes</u>	<u>Hillcrest</u>
9 Holes w/Cart <i>(Monday - Sunday)</i>	\$24	\$21
18 Holes w/Cart <i>(Monday-Friday)</i>	\$28	\$24
18 Holes w/Cart <i>(Saturday, Sunday, Holidays)</i>	\$36	\$28
9 Holes Par 3 Course	\$10	

Family Day on Par 3

Bring your family to Ben Hawes Golf Course to enjoy time together.
Play FootGolf, Golf or Both!
Any Sunday After 1:00 p.m.
Child plays FREE with paid adult.



WEEKLY SCRAMBLES

9:00 a.m. Shotgun Start

Ben Hawes - \$10, plus green and cart fee

Wednesday - Seniors 50+

Hillcrest - \$10, plus green and cart fee

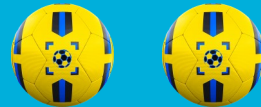
Tuesdays - Open to all ages

Thursdays - Seniors 55+

FootGolf

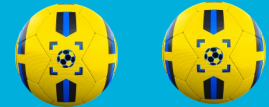
Ben Hawes Golf Course

Par 3 course
\$10 Play All Day!



Hillcrest Golf Course

18 Hole Course
\$12 after 1:00 p.m.



Ben Hawes

Happy Hour After 3:00 p.m.

9 Holes w/Cart \$15
9+ Holes w/Cart \$17
Par 3 \$7

Daily Discounts

Senior 55+ (wkday) - 18 Holes w/Cart \$23

Ladies Day - Tuesdays 9:00 a.m.

Driving Range - \$4 per token
(30 golf balls)

Hillcrest

Happy Hour After 3:00 p.m.

9 Holes w/Cart \$13
9+ Holes w/Cart \$15

Daily Discounts

Senior 55+ - 18 Holes w/Cart \$20

Ladies Day - Wednesdays 9:00 a.m.

ONLINE TEE-TIMES
for
Ben Hawes Golf Course
AVAILABLE AT
OWENBOROPARKS.ORG



270-687-7137



HILLCREST
GOLF COURSE

270-687-8717

2025 Season Pass Sales

November 1 - November 30

All Season Passes 10% Off

and \$50 Gift Card!

One Pass - 2 Courses

Call 270-687-7137

Passes and Gift Cards can be purchased online



Make your Outing Special



FootGolf & Golf Outings Packages available at both locations

Call Charles Whelan for details for available dates & times 270-687-7134

Finn Cycles Now Available Ben Hawes & Hillcrest!

Rentals: 18 Holes \$22 + Tax
9 Holes \$13 + Tax
(Green Fee Prices Separate)

TAKE A FINN FOR A SPIN



IMPROVE YOUR GAME DURING ALL FORE SEASONS!

SkyTrak Launch Monitor

**BEN HAWES
GOLF
COURSE**

\$25 - PUBLIC

**\$16 - PASS
HOLDERS**



Outings & More!



Jack C. Fisher Park Fields

3900 West 5th Street Road

270-687-8725

Park Hours

5:00 a.m. - 10:00 p.m.

AMENITIES

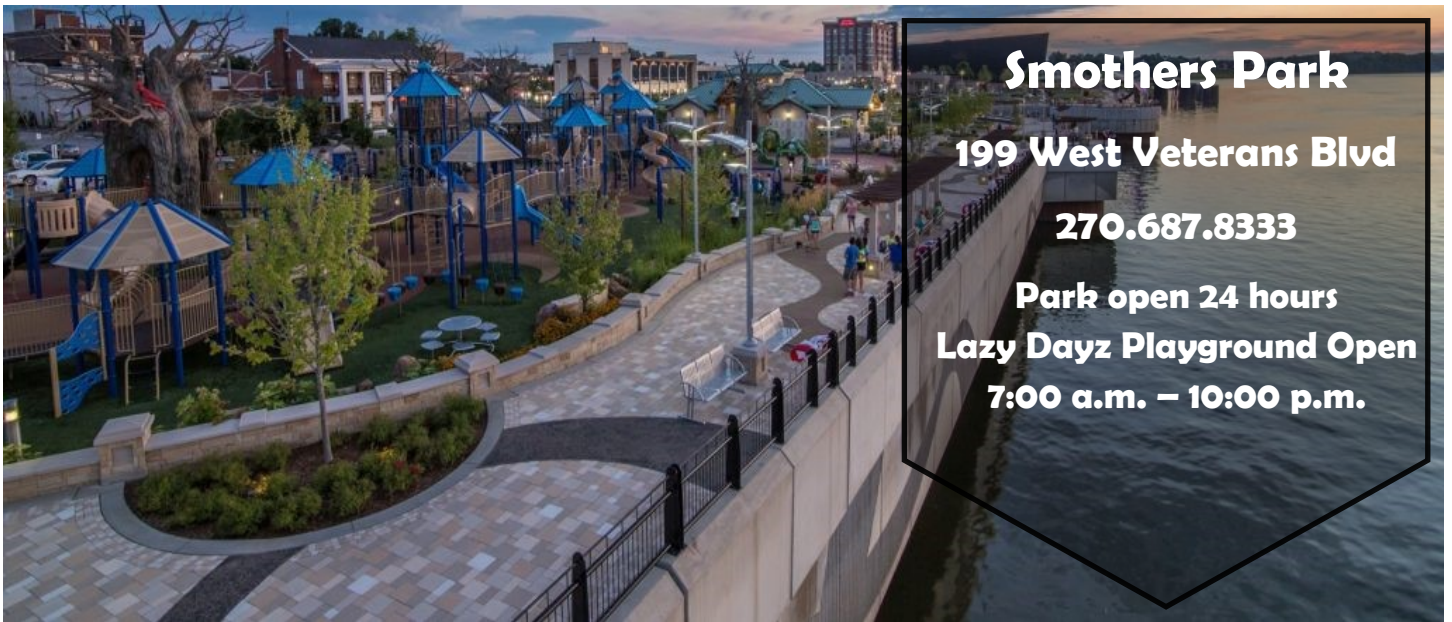
- Jack C. Fisher Park Fields
 - Four synthetic ball diamonds
 - Athletic field house with employee offices
 - Concession
 - Restrooms
 - Event room
- Batting Cages - Eight Hitting Tunnels
- Open Picnic Shelter and Picnic Tables
- Practice Softball Diamond
- Restrooms
- Paved Walking Trail - with Access to Adkisson Greenbelt Park
- Field rentals available for team practices & tournaments



COMING SOON

- Spring T-ball
- Spring Adult Softball
- Mini Corporate Challenge Leagues

Registration Starts Mid - January 2025



Smothers Park

199 West Veterans Blvd

270.687.8333

Park open 24 hours

**Lazy Dayz Playground Open
7:00 a.m. – 10:00 p.m.**

AMENITIES

- Inlet Water Fall
- Ronald Logsdon Spray Park
- Lazy Dayz Playground
- Signature Fountains
- Shelton Memorial
- River Front Swings
- Open Air Pavilions
- Overlook
- Concession Stand
- Restrooms



HIGHLIGHTS

- Rental Venues
- Party Packages
- Concession hours
- Owensboro Air Show
- Christmas Tree Lighting
- Christmas Parade

Smothers Park

Smothers Park is located downtown on Veterans Blvd. and is open **7:00 a.m. - 10:00 a.m.** The park includes fountains, swings, playground, concessions and a Spray Park for your enjoyment.

If you are under the age of 18, you must be accompanied by a parent or legal guardian to remain in the park after 10:00 p.m.

Concession Stand Hours

Present-September 4
Daily 11:00 a.m. - 8:00 p.m.
After September 4
Concessions will be open for
Special Events only
(weather permitting)



Lazy Dayz Playground

Open daily 7:00 a.m. - 10:00 p.m.
weather permitting

- All persons using the playground do so at their own risk.
- Children under 10 yrs. of age must be accompanied by an adult (18 years or older) and must be supervised by that adult at all times.
- Smoking or tobacco products are not allowed.
- Animals, except for service animals, are not permitted.
- Skateboards, roller blades, or bicycles are not permitted.
- High heels or cleats are not allowed.
- Profane language will not be tolerated.
- Refrain from using equipment when wet.

Weddings, Family Gatherings, Birthdays



The enchanting **OVERLOOK** is located at the foot of Frederica Street with breathtaking views and lighting.

The **ALLEN STREET PAVILLION** is a charming location and overlooks the Ohio River



The **EVENT LAWN** is a beautiful green area located on the west side.

For more information or to make a reservation, call 270-687-8333

Party Packages

Package 1

- Area reserved at the Allen St. Pavilion
- Birthday Child T-Shirt
- \$80

Package 2

- Area reserved at the Allen St. Pavilion
- Hotdogs, soft drinks, popcorn
- Ice cream from Cold Stone Creamery
- Cupcakes from the Cup Cakery
- Tables, chairs, napkins, spoons, plates and souvenirs
- Birthday child t-Shirt
- \$175 up to 12 children
- \$12 for each additional child





**Smothers
Park**
Christmas Tree
Lighting
Friday,
November 15
5:00 p.m.

**The Owensboro-Daviess County
Christmas Parade**
"The Gift of Christmas"
Saturday, November 16
4:30 - 6:30 p.m.

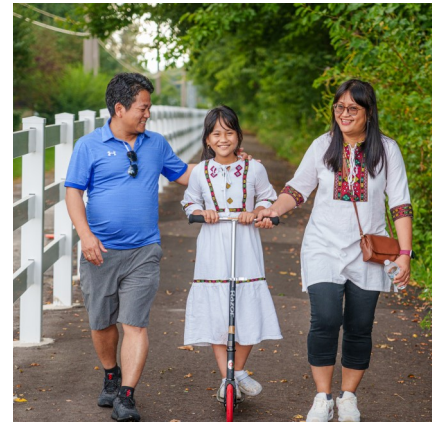


Parks and Amenities



AMENITIES

- Spray Parks
- Joe Ford Nature Center
- Walking Trails
- Bike Trails
- Multi-use Trails
- Skate Park
- Baseball Fields
- Tennis Courts
- Pickleball Courts
- Street Soccer
- Outdoor Shelter Rentals



Park Locations

Park Name	Address
Adkisson Greenbelt Park	See page ... for trail head locations
Ben Hawes Park	400 Booth Field Road
Cap Garner Park	238 East 20th Street
Chautauqua Park	1200 Bluff Avenue
Dugan Best Park	1003 Omega Street
English Park	2 Woodford Avenue
Goose Egg Park	1228 West 3rd Street
Heartland Park	2528 Avenue of the Park
Jack C. Fisher Park	3900 West 5th Street Road
James Mason Park	1401 West 7th Street
Joe Ford Nature Park	3870 West 2nd Street
Kendall-Perkins Park	1201 West 5th Street
Legion Park	3047 Legion Park Drive
Moneta Sleet Jr. Park	616 Walnut Street
Moreland Park	1215 Hickman Avenue
Mosely Square Cemetery	722 East 5th Street
Ninth Street Park	904 West 9th Street
Old Germantown Park	824 Crittenden Street
Smothers Park	199 West Veterans Blvd
Southern Park	2815 South Griffith Avenue
Thompson-Berry Park	1 Carter Road
Waymond Morris Park	5200 Todd Bridge Road
Yewell Heritage Park	3690 Haywood Court
York Park	2201 York Drive



Facility Locations / Contact Information

ADMINISTRATIVE CENTER

Office Hours: Monday-Friday
7:30 a.m. – 4:30 p.m.
1530 McJohnson Avenue (Chautauqua Park)
270-687-8700
Cancellation Line: 270-687-0000

DUGAN BEST RECREATION CENTER

1003 Omega Street
270-687-8714

BEN HAWES GOLF COURSE

400 Booth Field Road
270-687-7137

HILLCREST GOLF COURSE

4346 Old Hartford Rd
270-687-8717

JACK C. FISHER PARK FIELDS

3900 West Fifth Street Road
270-687-8725

COMBEST POOL

1530 McJohnson Avenue
270-687-8723

SMOTHERS PARK

199 W. Veterans Blvd
270-687-8333

EDGE ICE CENTER

1400 Hickman Avenue
270-687-8720

Park & Facility - Amenities



	Acres	Baseball Diamond	Batting Cages	Softball Field	Outdoor Basketball	Football Fields	Golf Course	Outdoor Tennis Courts	Indoor Tennis	Volleyball Court	Soccer Regular	Soccer Youth	Multi-Purpose Field	Outdoor Pool	Spray Park	Skate Park	Playground	Boat Ramp	Fishing Lake	Gazebo	Greenbelt Access	Pavilion/Shelter	Biking/Hiking Trails	Community Center	Street Soccer	Pickleball Court	Archery	Foot Golf Courses
Adkisson Greenbelt Park	2.0																			1		14.5						
Airport Practice Fields	16.7												6															
Ben Hawes Golf Course and Park	553.0			1	2		27			1							1					3	12				1	1
Cap Gardner Park	1.1																			1			0.25					
Chautauqua Park (Combest Pool)	32.0	3			1									1	1	1						1	0.66					
Cravens Pool	n/a												1															
Dugan Best Park	6.8			1	1			2									1					1	0.37	1				
Edge Ice Center	n/a																											
English Park	16.6																1	1				1						
Fisher Park	33.4		8	5															2	1	2	0.75						
Goose Egg Park	0.5																1											
Heartland Park	0.4												1				1		1	1								
Hillcrest Golf Course	69.0						9												1									1
James Mason Park	1.3																											
Joe Ford Nature Park	15.3																				1	0.97						
Kendall-Perkins Park	2.4				2		2							1	1							1						
KWC	n/a						4																					
Legion Park	21.7				2									1	1							2	0.5	1				
Moneta Sleet Jr. Park	1.1				1												1		1									
Moreland Park	17.0	2			1		12	1									1					2	0.6					
Mosley Square Cemetery	0.5																											
Old Germantown Park	2.1																		1			0.25						
Owensboro Tennis Complex	6.3						12	6																				
Smothers Park	6.1													1	1				1			2						
Southern Park	6.5	3																										
Thompson-Berry Park	48.2									2	8					1												
Waymond Morris Park	51.9					4												1				1.5						
Yewell Heritage Park	45.1																	1		1								
York Park	2.7				1												1			1						4		
TOTALS	959.6	8	8	7	11	4	36	29	6	2	1	9	7	2	3	1	14	1	5	5	5	15	32.3	1	1	4	1	2

Shelter Reservations

Shelter Reservation Procedure

Reservations for the 2025 Season will begin **Monday, November 4**

Available daily April 4 through November 2 from 8:00 a.m. – 9:00 p.m.

All reservations must be made a minimum of 10 business days in advance. No reservations can be made by voicemail.

Reserve your shelter online at owensboroparks.org, or call 270-687-8700

No changes/refunds will be given for cancellations made less than 14 business days from the date of the event.

A refund may be issued, minus an Administrative Fee, if requested at least 14 business days prior to the reservation date.

The following shelters are available for \$48 for 4 hours and \$12 for each additional hour, plus tax

Legion Park



- 2 Screened Shelters
 - (9) 8 ft picnic tables
 - Electrical Outlets
 - Lights
 - Ceiling Fans
- Playground
- Lighted Basketball Court
- Street Soccer Court
- 0.5 mile Paved Walking Trail
- Spray Park (weather permitting)

Moreland Park



- 1 Screened Shelter
 - (12) 6 ft picnic tables
 - Electrical Outlets
 - Lights
 - Ceiling Fans
- Playground
- Lighted Basketball Court
- Lighted Tennis Courts
- Sand Volleyball Court
- 0.6 mile Paved Walking Trail

- Electrical Outlets
- Playground
- Sand Volleyball
- Archery Range
- FootGolf
- Golf Course
- Gaga Pit

Ben Hawes Park



3 Open-Air Shelters

Fee - \$65 each

for the day

Travis Aubrey Skate Park

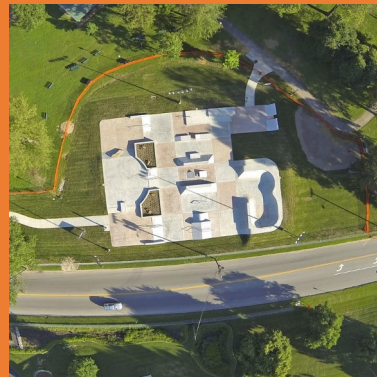
Chautauqua Park
1301 Bluff Avenue

Open Dawn - 11:00 p.m.

Weather Permitting

1. Only skateboards, inline skates and BMX bikes are allowed.
2. This is an unsupervised park and all users do so strictly at his/her own risk. The City of Owensboro does not assume any responsibility for loss or injury.
3. Use of this park is permitted during posted hours only. Violators may be cited or fined.
4. Use of safety equipment such as helmets and pads is strongly recommended.
5. All those under 18 years of age shall have adult supervision.
6. Bicycles must have protective covering on all pegs.
7. Weather conditions such as rain, snow and ice can impair ramps and skating surfaces. The Skate Park should not be used in those weather conditions.
8. Be aware of your surroundings at all times while using the Skate Park. Loose and/or flying skateboards are possible.
9. Spectators shall stay off the concrete.
10. Obstacles, ramps or other equipment that are not a part of the original structure are not permitted to be used or added to the facility.
11. Improper conduct may result in suspension or expulsion from the park and may result in temporary closure of the facility.
12. Special Events require permitting by the City of Owensboro.
13. Please skate safely and be respectful and courteous to others. Share the park.
14. The following are not permitted in the park:

- ◇ Smoking/Tobacco Products
- ◇ Alcoholic Beverages
- ◇ Drugs
- ◇ Profanity
- ◇ Road/Mountain Bikes
- ◇ Bullying/Fighting
- ◇ Graffiti/Tagging
- ◇ Pets
- ◇ Loud music
- ◇ Glass containers
- ◇ Unlawful Weapons



Anyone caught not following the rules by Parks & Recreation Staff or the Owensboro Police Department may be banned from use of the park for a minimum of two days up to a permanent ban. Please take pride in your skate park, place trash in receptacles and always display appropriate behavior.

Paved Walking Trails

Adkisson Greenbelt Park

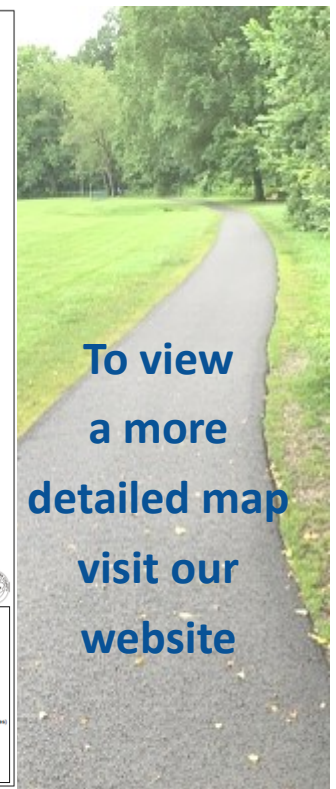
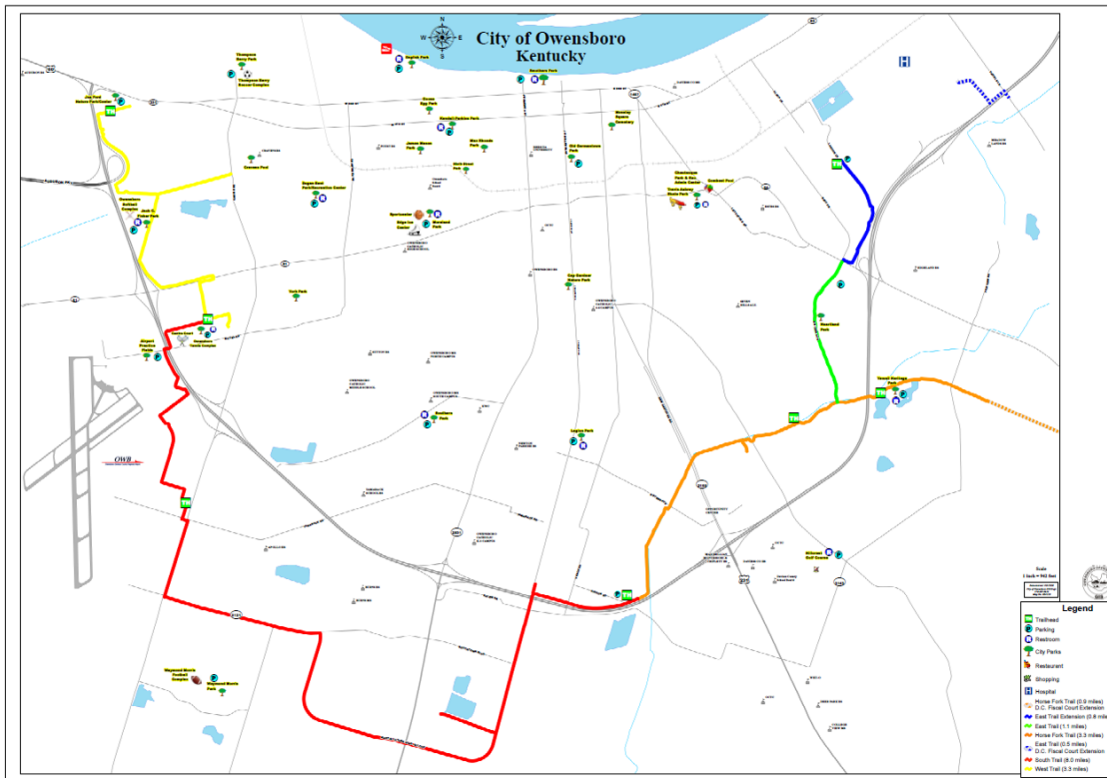
The Greenbelt Park is designed to encircle the city, linking neighborhoods, business districts, parks and schools. The trails that make up the Greenbelt Park offer a 10-foot wide asphalt surface that will easily accommodate pedestrians and bicyclists and meets the Americans with Disabilities Act Standards. Whether you enjoy walking, running, skating or bicycling for recreation, fitness, or to reach a destination, the Adkisson Greenbelt Park is an enjoyable and healthy place to be.

West Owensboro Trail 2.5 miles - Joe Ford Nature Park to Shifley Park

South Owensboro Trail 8 miles Shifley Park to Carter Road to Theatre Way to Southtown Blvd. to Higdon Road

Horse Fork Trail 2.5 miles Higdon Road to Brookhill Subdivision (Yewell Heritage Park)

East Owensboro Trail 1.9 mile Horse Fork Trail (Yewell Heritage Park to Lagoon Lane)



To view
a more
detailed map
visit our
website



Park Walking Trails at City Parks:

Chautauqua Park	. 7 miles
Dugan Best Park	. 8 miles
Jack C. Fisher Park	. 7 miles
Joe Ford Nature Park	. 4 miles
Legion Park	. 5 miles
Moreland Park	. 6 miles
Waymond Morris Park	1. 5 miles